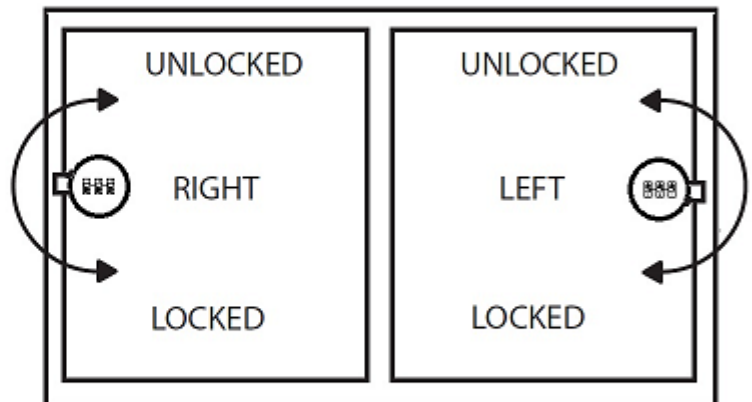
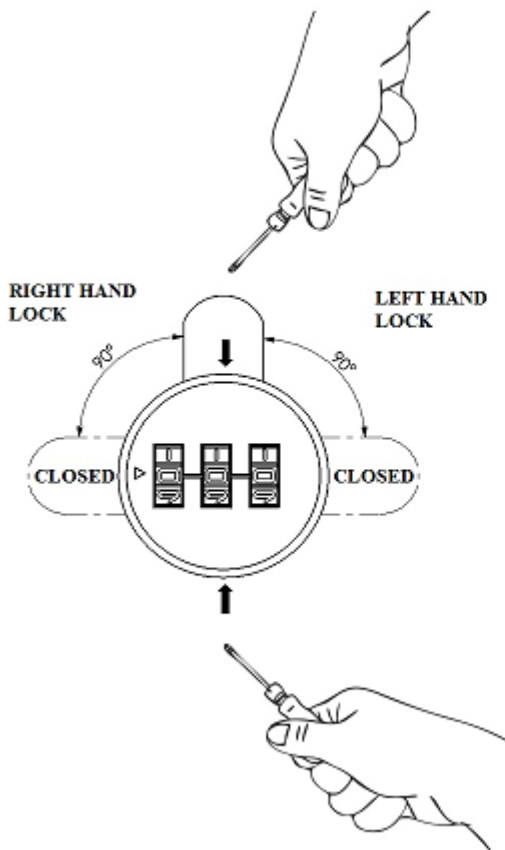


Instruction manual for lock “Jacks”

Setting New Code:

1. Factory code is 0-0-0.
2. Set the lock to lock to factory code 0-0-0 or to the “old” code if you changed the code already in the past.
3. Turn the lock to closed position. The small hole on the turning wheel opens up. On a right hand lock the hole appearance in the top. On a left hand lock the hole is in the bottom of the turning wheel.
4. Use a pin of less than 3,5mm diameter to push into the hole.
5. Hold the pin down until you have changed to the desired code.
6. Release the pin and the new code is set.



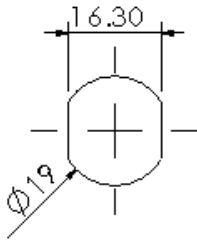
Changing the turning direction:

1. Dis-assemble the cam plate from the lock
2. Pull of the back of the lock with your fingers.
3. Change the position of the small brass pin to the desired turning direction.

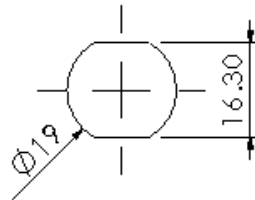


4. Re-assemble the lock

Hole size and position for installing the lock:



Right & left hand hole size



180 degree hole size